

EXPLORE!

Tour Notes



Zululand and Kruger Wildlife + Cape Escape (ZKC 2015)



TOUR DURATION
20
DAYS



Tour Style: Classic
Tour Pace: Busy

Tour Type: Small Groups
Tour Comfort: Standard

tour Code: ZKC

Tour Highlights - Zululand and Kruger Wildlife + Cape Escape

- ✓ Game Viewing - The big game of Africa from 4WD safari vehicles.
- ✓ Kruger - The most iconic National Park in South Africa, home to the Big Five.
- ✓ Hluhluwe-Umfolozi - The biggest rhino population in Africa.
- ✓ Mlilwane - A secluded wildlife sanctuary beneath the Nyonyane Mountains in Swaziland.
- ✓ St. Lucia - A remarkable wetland home to hippo, crocodile and a myriad of bird species.
- ✓ Mpumalanga - God's Window and the awe-inspiring Blyde River Canyon

Tour Essentials

Accommodation: 11 nights Standard Hotel
1 night Standard Hut
4 nights Standard Lodge
2 nights Standard Beehive Huts
1 night Standard Bungalow

Included Meals: 19 breakfasts, 1 lunch, 2 dinners

Start Point: Join tour: Johannesburg
End Point: Tour ends: Cape Town
Transport: 4WD
Countries: South Africa, Swaziland

Zululand & Kruger Wildlife + Cape Escape

On this trip we visit the great game reserves of South Africa and Swaziland. We search for the Big Five in the renowned Kruger National Park and track both white and black rhinos in the Hluhluwe-Umfolozi Reserve. We also visit the Zulu battlefields, discover the wetlands of Greater St Lucia and take a walking safari through Mlilwane Wildlife Sanctuary in Swaziland.



Suitability

We've given each of our tours a comfort rating and a tour pace, walking or cycling grade to give you a general idea about the level of activity on each tour and the standard of accommodation you will be staying in at the end of your day's adventure.

Often you'll stay in different styles of accommodation during your tour; so we make an average rating across the entire tour. For more information on where you'll stay each night, please refer to the day by day tour itinerary.

Tour Comfort: Standard

Our mid-range accommodation offers a good level of service often with other amenities such as a restaurant, bar, garden or swimming pool. Generally rooms will be comfortable with en-suite facilities.

Tour Style: Classic

Packed with adventure, these tours offer inspiring destinations and authentic travel experiences at a reasonable price. Using all kinds of transport and accommodation, we'll take you off the beaten track to discover the true heart of the people and places you visit.

Tour Pace: Busy

There may be early starts, long journeys and tiring days along the way, but you'll return home feeling you've really experienced as much as you possibly could.

Your tour itinerary

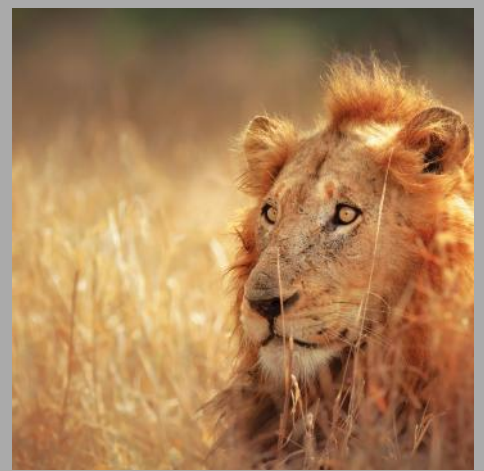
Tour itinerary notes

While our intention is to adhere to the day-by-day itinerary as printed below, a degree of flexibility is built in. Overnight stops may vary from those suggested.

DAY 1 Join tour in Johannesburg; drive to the Drakensberg Mountains

Heading south-east out of Johannesburg our first destination is the Drakensberg Mountains. Drakensberg is the world's oldest mountain range and derives its name from the Afrikaans word for 'Dragon Mountains'. In the inevitable mist and the razor back ridges one can see a likeness to these mythical beasts. The hikes, the plunge pools and all-round silence make the Drakensberg Mountains a must-see. The Drakensberg itself comprises basalt massifs that have been cut through by crystal clear streams. The indigenous people that lived here called these mountains the Ukhamba, or barrier of spears, because all of their peaks resemble upturned weapons. The old San bushman culture is reflected richly in the paintings that dot the cliff faces and overhangs, reminding all South Africans of their rich history. On arrival this afternoon we will have the opportunity to take a short walk to appreciate our surroundings in the Royal Natal National Park.

EXPLORE! The Adventure Travel Experts available online 24/7




Overnight: **Standard Hotel**
Single Room Available

 **Included Meals:** Dinner

DAY 2 Hike in the Tugela Gorge

Today we have the opportunity to explore the breath-taking amphitheatre where the Tugela River has its source. These are said to be amongst the world's highest falls, dropping some 900 metres off the top of the Drakensberg escarpment. The scenery is spectacular, and in spring and summer the valley is a carpet of indigenous flora. The path meanders in and out of lush forests with great views down the hills. This will be a 4-5 hour walk. For those feeling less energetic there are a number of shorter walks available to you near the campsite and there may be a possibility of taking a dip in a cascade by a waterfall.

Overnight: **Standard Hotel**
Single Room Available

 **Included Meals:** Breakfast, Lunch, Dinner

DAY 3 Visit battlefields; drive to Ulundi

Today we visit the famous battlefields and witness authentic Zulu war dancing (optional depending on numbers). As anyone who has ever watched the film Zulu Dawn will know, the battlefields of Rorke's Drift and Isandlwana were the scenes of bloody and hugely significant events in the history of the Zulu nation. We will visit the battle sites of Rorke's Drift and Isandlwana to gain a perspective into the people and history of South Africa. Isandlwana is undoubtedly the most haunting of all the battlefields as the many white cairns reflect upon the arrogance of a Victorian empire and the victory of the Zulu people who call themselves 'the children of the stars'. The hill of Isandlwana stands a silent testimony to the determination and pride of the Zulu people. Isandlwana is truly haunting in the lessons it taught South Africa of colonialism and the folly of war. Rorke's Drift, a battle made famous in the film Zulu, is unique for the awarding of eleven VC's in a single engagement. We make our way to the Zulu Capital in Ulundi where we will overnight in traditional-style huts.

Overnight: **Standard Hut**

 **Included Meals:** Breakfast

DAY 4 Game Drives at Hluhluwe-Umfolozi Game Reserve; drive to St Lucia

We spend our first full day in the area making an extensive game drive in the famous Hluhluwe-Umfolozi Game Reserve - formerly the Zulu kings' hunting ground in days gone by. This reserve has achieved remarkable success with an ambitious rhino conservation programme which has brought the rhino back from the brink of extinction. As a result, it now supports the densest rhino population in Africa with both black and white rhino. It also supports lion, cheetah, leopard, wild dog, and crocodile. Birdwatching is particularly good in the reserve with over 500 species recorded. We make our way to St Lucia in the late afternoon.

Overnight: **Standard Lodge**
Single Room Available

 **Included Meals:** Breakfast

DAY 5 At St Lucia Wetland Reserve

Today is left free for you to choose one of the many optional activities available in the area. The beaches of St Lucia and Cape Vidal are completely unspoilt and untouched, with recent legislation prohibiting vehicles from entering and blemishing these huge tracts. It is an internationally recognized site for the critically endangered leather-backed turtle. A phenomenon that is unrivalled is the annual migration of sardine fish, followed by dolphins, sharks, barracudas and marlin. Apart from enjoying the natural wonders on another game drive, you may like to take an active excursion by 4WD within the Wetland Park itself to Cape Vidal which includes dune walking, a braai (or barbeque) and snorkelling. Some of the other optional activities available are a night drives around the wetland reserve to possibly see genet, owls, chameleons and rare cats. Also from November to February there are trips to spot giant turtles coming ashore. Whale watching is good from June to November. There is also the option of a boat trip on the St. Lucia River to spot hippos, birds and crocodiles.

Overnight: **Standard Lodge**
Single Room Available

 **Included Meals:** Breakfast

DAY 6 Drive to Swaziland

We drive north and enter Swaziland - a tiny, independent kingdom inhabited by the Swazi tribe who revere their king and hold on to their culture and traditions. Our journey takes us through some spectacular scenery in the Ezulwini Valley and past numerous traditional homesteads and curio stalls. In the late afternoon we enter one of Swaziland's best wildlife reserves, Mlilwane Wildlife

EXPLORE! The Adventure Travel Experts available online 24/7

Sanctuary. This secluded and beautiful sanctuary is a haven of tranquillity, located as it is in a natural bowl beneath the Nyonyane Mountains. For the next two nights our accommodation is in traditional dome-shaped beehive huts set in a wooded area. Though the camp has all the mod cons of showers, toilets, outdoor swimming pool and restaurant/bar it is rustic in the best sense of the word. Warthogs and ostrich share the camp with us and the restaurant overlooks a lake populated by water birds.

Overnight: **Standard Beehive Huts**
Single Room Available

 **Included Meals:** Breakfast

DAY 7 Game viewing and optional activities in Mlilwane Wildlife Sanctuary

Mlilwane is Swaziland's oldest protected area, owned and managed by a non-profit making trust. Mlilwane is situated in the low foothills of the Nyonyane Mountains. The Sanctuary has been rehabilitated and is now Swaziland's most frequently visited reserve where one can enjoy the beauty of the surroundings and the abundant wildlife that grace the plains. Visitors can explore the southern portion of the Sanctuary by foot, vehicle, and on mountain bikes. This morning we begin with a walk in search of zebra, wildebeest, impala, nyala and warthog. Mlilwane has a large area of open grasslands, so game viewing is relatively easy. The afternoon is left free for you to choose one of the many optional activities on offer. The great advantage of Mlilwane is that the absence of big cats allows for a very different game viewing experience. Those who simply want to relax can sit back in the camps and enjoy the tranquillity of Nature.

Overnight: **Standard Beehive Huts**
Single Room Available

 **Included Meals:** Breakfast

DAY 8 Drive to Kruger National Park

After an early start, we drive north, enter South Africa and a little further on cross the Crocodile River into the Kruger National Park. This two million hectare wilderness is amongst the world's first proclaimed Game Reserves and is justifiably South Africa's showpiece, with 147 mammal species roaming in the freedom that this National Park offers. It has a very good infrastructure, although 96% of the land is still as pristine and untouched as it was before the first settlers arrived. The Kruger Park is a world leader in animal and plant research. It offers scenery as diverse as riverine forest, granite outcrops, endless savannah and impenetrable Mopani woodland. We take open-vehicle game drives in our modified Toyota Landcruisers on our way to the camp where we overnight. These camps are very comfortable.

Overnight: **Standard Bungalow**
Single Room Available

 **Included Meals:** Breakfast

DAY 9 Game viewing in Kruger National Park; drive to Graskop

This morning we drive around the Kruger National Park, one of the world's premier game reserves. Covering an area larger than Israel, the park was established in 1898 to protect big game that had almost been hunted to extinction. The park is now one of the most prolific animal habitats in South Africa, committed to animal conservation and patrolled by armed rangers to prevent illegal poaching. A large number of species are present, including elephant, lion, black and white rhino, leopard, cheetah, giraffe, zebra, wild dog, hyena, wildebeest and almost all of South Africa's species of antelope. Bird life is just as impressive with crowned cranes, bee-eaters, sunbirds and vultures. We spend a full day in the park before moving on to Graskop in the late afternoon for our overnight stop.

Overnight: **Standard Lodge**
Single Room Available

 **Included Meals:** Breakfast

DAY 10 Drive through Mpumalanga to Johannesburg. Fly to Cape Town

The airy uplands of Mpumalanga (formerly Eastern Transvaal) has been inhabited since Stone Age times and with its plentiful water from mountain rivers, multiple waterfalls, beautiful craggy escarpments covered in vegetation, and colourful birdlife, it is easy to understand why. We'll stop at several excellent viewpoints, including the aptly named God's Window and admire the awe-inspiring Blyde River Canyon and take it all in before we make our final journey back to Johannesburg. We will then take an evening flight to Cape Town. Cape Town embodies the feeling of energy and hope that South Africans feel for the future of their country with its spectacular natural assets, modern high-tech city centre and mixed population living peaceably together and at the same time retaining their own customs. Cape fur seals can often be seen playfully frolicking in the harbour waters of the Victoria and Alfred Waterfront.

Overnight: **Standard Hotel**
Single Room Available

Swimming Pool Available 

 **Included Meals:** Breakfast

DAY 11 Tour Cape Peninsular NP

We spend the whole day enjoying a comprehensive sightseeing tour of the many points of interest on the Cape Peninsula. We drive to Hout Bay, an attractive fishing port once flanked by dense forest with a dramatic backgroup. Here you can take a short optional boat trip out to Seal Island. The island is home to about 1000 Cape fur seals and is guarded by the impressive 'Sentinel'; a towering mountain that guards the harbour. One of the highlights today is a visit to the Cape of Good Hope, first seen by a European in 1488 when Diaz sailed round it on his search for a sea route to the East Indies. A century later Sir Francis Drake described it as 'the fairest cape we saw in the whole circumference of the earth'. But it was another century before the Dutch East Indies Trading Company established a permanent settlement to supply ships with cattle and water traded from the indigenous Khoi who reared livestock on the land around the coast. We climb up to a viewpoint and watch the reputed turbulent clash of the warm Agulhas current from the Indian Ocean meeting the cold Benguela current from the Atlantic. If you're feeling active, a short trail leads down to Cape Point. Boulders beach is worth a stop to see an amazing resident African penguin colony, one of the only places in the world where this sea bird resides! Then, passing perfect sandy beaches we return to Cape Town city.

Overnight: **Standard Hotel**
Single Room Available

Swimming Pool Available 

 **Included Meals:** Breakfast

DAY 12 Hike or cable-car up Table Mountain then drive to Stellenbosch.

This morning we plan to ascend Table Mountain. You may choose to take a 3-4 hour hiking trail up to the top accompanied by your Tour Leader (if the weather is clear). Alternatively, an aerial cableway runs frequently to and from the summit. This is our first encounter with some of the unique and colourful flowers from the Cape Floral Kingdom. This plant kingdom has more indigenous plant species per square metre than anywhere else on earth. Views from the top are simply stunning. A network of trails criss-cross the plateau that provide a variety of vantage points. Later in the day we'll head out of Cape Town to stay on a guest farm in the Stellenbosch region. The Stellenbosch region produces some of the finest 'New World Wines' that have been honed over several centuries by the Afrikaans wine growers. Should you wish to do so you will have the opportunity to sample some of their latest vintages.

Overnight: **Standard Hotel**
Single Room Available

 **Included Meals:** Breakfast

DAY 13 In Stellenbosch

To the north and east of Cape Town are the Cape Winelands, whose rugged mountains, rise sheer from rolling green valleys, neatly planted with vineyards and dotted with white washed manor houses. This is an image more reminiscent of a central European fairy-tale than Darkest Africa. Stellenbosch is one of the most beautiful and heritage-rich towns in southern Africa. Entering the town via historic Dorp Street is akin to stepping into the pages of a history book. A settlement was first established here in 1679 following the discovery of a river running through a fertile, green valley by Simon van der Stel, then Governor of the Cape. There is an opportunity to stroll through this historic town and take in the distinct architecture that reflects South Africa's rich and diverse history. You can choose to explore on your own following self-guided trails or take an optional guided tour. If you are feeling energetic, you may like to take a walk on the Helderberg Mountains just behind Stellenbosch.

Overnight: **Standard Hotel**
Single Room Available

 **Included Meals:** Breakfast

DAY 14 Drive to Oudtshoorn

We start early on our scenic journey into the Little Karoo as there are several points of interest worth visiting en route. Located in the heart of the verdant Breede River Valley (the largest of the Western Cape's fruit and wine producing valleys), Worcester is home to the Karoo National Botanical Garden - a haven for rare or endangered plants. A short walk around the centre of town allows a glimpse of the fine Victorian town buildings. We continue our drive through the stark and arid landscapes of the Little Karoo heading east through Barrydale & Ladismith. Finally, we reach our accommodation close to Oudtshoorn in the traditional centre of South Africa's ostrich farming industry.

Overnight: **Standard Hotel**
Single Room Available

Swimming Pool Available 

 **Included Meals:** Breakfast

DAY 15 In Oudtshoorn

We head off early this morning to experience the stunning variety of landscapes of this region and start off by exploring the massive limestone caverns of the Cango Caves where guided tours of varying durations run regularly throughout the day (optional). The caves are an underground wonderland of extraordinary structures millions of years old. The combination of dripping rainwater and limestone has led to the creation of some of nature's most breathtaking natural structures. A local European farmer, by the name of van Zyl, first discovered the caves late in the 18th century. Although, in times past, the local Khoisan sheltered in the cave complex's entrance but they never ventured any further into the cave complex. When van Zyl, with a single candle, entered the cave complex and its first massive chamber and spoke, he realised from his muffled voice that there was something far bigger and grander than his candle light could show. Ever since then the caves have been enjoyed and explored by professionals and amateurs alike. In the afternoon we offer an optional visit to a local Ostrich Farm where you can see Zimbabwean Blue, Kenyan Red and also South African varieties of this bird, along with the beautiful white ostriches which are very rare.

Overnight: **Standard Hotel**
Single Room Available

Swimming Pool Available 

 **Included Meals:** Breakfast

DAY 16 To Knysna

After leaving Oudtshoorn we travel over the protea-covered on the dramatic Outeniqua pass through the Outeniqua Mountains. These mountains form a very formidable barrier between the dry interior and the lush coastal strip known as the 'Garden Route'. Knysna was originally a harbour, forestry and mining centre. The setting will give you a real appreciation of how skilful maritime captains of old were to pilot their vessels in, and out of the lagoon. Knysna's lagoon is the foundation of the town's wealth. It was here that ships could shelter and victual and valuable raw material like wood could be transported to other centres of industry. It was also home to the reputed illegitimate son of King George III, George Rex. He is considered the main driving force in establishing Knysna as a commercial town. Today it is noteworthy as an artists' retreat and adventure activity base and has twice been voted South Africa's favourite town. Later today it may also be possible to take an easy walk on the magnificent Robberg Peninsula. Named after the seal colony found there by Dutch sailors. From here the views of the coastline are fantastic and it is easy to understand why our early ancestors used this peninsula as a home. From the peninsula have a really good chance of seeing seals, dolphins and the Southern Right Whale. During June to late November, the whales come into calmer and warmer waters to calve and nurse their young.

Overnight: **Standard Hotel**
Single Room Available

Swimming Pool Available 

 **Included Meals:** Breakfast

DAY 17 In Knysna; visit Tsitsikamma Park

No visit to the Garden Route would be complete without a visit to the magnificent Tsitsikamma National Park. Tsitsikamma is a marine and forest park, stretching for some 80 km, from a lagoon at Nature's Valley to the mouth of the Groot River. The lush forest and the sheer cliffs provide an ideal setting for a short walk in the forests to the suspension bridge that spans the mouth of Storm's River. The rugged coastline with crashing waves and the forest covered cliffs are simply spellbinding. While you are here, you must definitely sample the excellent local seafood available in the area.

Overnight: **Standard Hotel**
Single Room Available

Swimming Pool Available 

 **Included Meals:** Breakfast

DAY 18 Visit Botelierskop Private Game reserve, drive to Swellendam

This morning we have an early start to drive to Botelierskop Private Game Reserve to take a 3 hour game drive. You will be accompanied by a local guide in your open 4x4 safari vehicle in the 3000ha reserve to view African wildlife in its natural habitat. There are around 1800 animals in the reserve including rhino, buffalo, giraffe, zebra, eland, bontebok and black impala. There are also orphaned elephants and in the lion sanctuary a small number of orphaned lions. Following the game drive we will continue to follow the garden route to the farming region of Swellendam, a lovely old town with numerous Cape Dutch buildings, interesting museums and art galleries. Later this afternoon you may choose to visit a local township, considered to be one of the highlights of this tour.

Overnight: **Standard Lodge**
Single Room Available

 **Included Meals:** Breakfast

DAY 19 Along the Whale Route to Cape Town

On our penultimate day we follow the acclaimed Whale Route along the dramatic south coast to Cape Town. Our first stop is wild and dramatic Cape Agulhas, the southernmost point in Africa. It is also the point where the Atlantic Ocean officially meets the Indian

EXPLORE! The Adventure Travel Experts available online 24/7

Ocean. We then drive on to the small seaside resort of Hermanus that is regarded as one of the premier spots for whale-watching in Africa, if not the world! Every year, between June and December, Southern Right whales spend a few months every year in the Cape, mating and calving. Hermanus is one of the best places to see them as they come very close inshore and the cliff top coastal walk offers many convenient viewing points. The calving and mating is a spectacle not to be missed. Hermanus is the only place in the world to employ a whale crier. He keeps everybody informed of the whereabouts of the whales by blowing his kelp horn. The whale crier is as much a part of the whale watching as the whales are. Finally, we return to Cape Town via Betty's Bay and Gordon's Bay coast affording spectacular views across both Walker Bay and False Bay. Please note: Final timings of today's itinerary are flexible and depend on seasonality and the likelihood of spotting whales. Out of whale season we may arrive in Cape Town earlier in the day.

Overnight: **Standard Hotel**
Single Room Available

Swimming Pool Available 

 **Included Meals:** Breakfast

DAY **20** Tour ends Cape Town

Most of today is left free for personal exploration before the flight to London this evening. You may choose to visit the Kirstenbosch National Botanical Gardens. The gardens lie on the eastern slopes of Table Mountain and consist of landscaped gardens of indigenous plants and trees. The gardens are a living display of floral beauty and features 4700 of the estimated 20000 species of indigenous South African flora, and close to 50 per cent of the Peninsula's floral wealth! You may opt to take a boat trip to visit Robben Island, if you haven't already visited on Day 1. It has had a dark history serving as a prison. It is here that Nelson Mandela served most of his prison sentence under the South African government. It is now a worthy and powerful symbol of the optimism and hope for the future of South Africa. If this all sounds far too strenuous, you could just soak up the vibrant and colourful atmosphere at the Victoria and Alfred Waterfront and just wander or do some last minute shopping! You may want to take a short city tour with your tour leader.

 **Included Meals:** Breakfast

Accommodation and Meals

Accommodation Rating

South Africa has a good tourism infrastructure and generally good service standards. Our accommodation throughout this tour is varied to reflect the many aspects of this beautiful country. We use a combination of small, family run guesthouses, characterful park lodges, and we spend one night in a permanent tented camp. Some of the properties are owner-occupied and give a real taste of traditional South African hospitality and we love supporting these small local businesses. In St Lucia we stay at a local style lodge within the wetlands area. Our most unusual accommodation is our beehive huts in Mlilwane - a traditional Swazi design but with en suite facilities! In Kruger we stay in a tented camp in the heart of the National Park, a great base for our exploration of these iconic gamelands.

Food & Drink

Included meals: 19 breakfasts, 1 lunch, 2 dinners included in the price of this tour. Please be prepared to pay for non-included meals. Please note that costs for drinks and meals can vary depending on location.

Budgeting for your Tour

You will need some extra money to cover meals and drinks not included in the tour price, any optional sightseeing, souvenirs and items of a personal nature such as laundry.

Food

The costs for meals may vary depending upon location, type of restaurant and number of courses eaten and so the prices given are an average guide. Local restaurants located off the beaten track may be less expensive, whereas an upmarket restaurant located in the centre of a major city may charge more.

South Africa

Lunch £: 6.00

Dinner £: 12.00

Swaziland

Lunch £: 10.00

Dinner £: 15.00

Drink

The prices for drinks can vary greatly depending upon location and the prices detailed below are an average guide. In general you would expect that drinks purchased in a supermarket or local bar to be less expensive, whilst drinks in an upmarket bar or restaurant may be more expensive.

EXPLORE! The Adventure Travel Experts available online 24/7

South Africa

Bottle of Beer £: 1.20

Water £: 1.00

Swaziland

Water £: 1.00

Other Sightseeing & Activities

The following excursions and/or activities are usually available and may be arranged locally. Estimated costs are provided below for guidance only, are on a per person basis unless shown otherwise, and may depend on the number of participants. Prices quoted are correct as of the date these tour notes were originally issued but may change at any time due to currency fluctuations.

Please note: These activities are booked and paid for direct with the supplier and do not form part of your Explore holiday contract.

Optional Excursions

St. Lucia - Boat trip on Lake St. Lucia R180; Full day Cape Vidal excursion (includes lunch) R550; St. Lucia night drive to spot turtles (Nov-Mar) R850; Whale watching (June-Nov) R960 pp; Night game drive in St Lucia Wetland Reserve R395.

Mlilwane Wildlife Sanctuary - Mountain bike hire approx. £12 per hour; guided walk £10.

Kruger National Park - Night drive £15.

If you would like to book an excursion to Robben Island, the former prison where Nelson Mandela was incarcerated please use this link: <http://www.robben-island.org.za/> It is very important that you book the 9am ferry for day 20 of the tour. There is no other ferry time or day that is possible, due to our itinerary. If there are spaces it is also possible to book this excursion locally, but this is subject to availability.

Tipping - Local Crew

Although entirely voluntary, tipping is a recognized part of life in this region of the world. Some local staff will look to members of the group for personal recognition of particular services provided. You should allow £20-£25 for tipping. In order to make things easier for you, the Tour Leaders may organise a group's tips kitty and if this is the case, they will account for it throughout the tour.

Foreign Exchange

South Africa

ATM Availability: Cash can be drawn on debit cards from ATM's in most South African towns.

Credit Card Acceptance: In large shops and restaurants.

Travellers Cheques: Can be exchanged in Cape Town, Stellenbosch, Knysna and Oudtshoorn.

Local Currency: Rand.

Recommended Currency for Exchange: Take your money in a combination of cash and an ATM card. Both GBP and USD are readily exchanged.

Where to Exchange: Cape Town, Stellenbosch, Knysna and Oudtshoorn.

Swaziland

ATM Availability: Cash can be conveniently drawn on credit/debit cards from ATM's in most South African towns.

Credit Card Acceptance: Credit cards are usually accepted in large shops and restaurants.

Travellers Cheques: We do not recommend to take travellers cheques as these are quite difficult to exchange.

Local Currency: Lilangeni but South African Rand is accepted

Recommended Currency for Exchange: Both GBP and USD are readily exchanged. Please note that the banks and Forex Bureaus do not accept US Dollar notes pre-2002. Take your money in a combination of cash and travellers cheques and take an ATM card.

Where to Exchange: On arrival.

Joining your Tour

Flight Information

You are able to book this tour on a 'land only' basis or as a 'flight inclusive' package. Your flight inclusive package will be fully protected by the Civil Aviation Authority (CAA) ATOL protection scheme.

Booking a land only package with Explore

Customers who have chosen to book on the 'Land Only' arrangements of our tour, please ensure that you have checked your tour specific 'Joining Instructions' prior to booking your own travel arrangements. Your joining instructions can be found on our website at www.explore.co.uk, in the tour specific dates and prices section.

You may also be eligible for the Free Explore Transfer. For more information please refer to <https://www.explore.co.uk/transfers>.

Joining Tour Abroad

Customers booked on the 'Land Only' arrangements will now receive a Free Transfer, provided you arrive and depart on the tour only itinerary start and end dates. The transfers will be from the Explore designated airport or train station to the joining point of your tour, and then back from the ending point to the designated airport or train station. The exception to this rule is customers who are booked on a tour where the joining and ending point is at the designated airport or train station.

If you are not eligible for the Free Transfer then you will need to make your own way through to the joining and ending point. On a majority of our tours Explore will be able to provide a private transfer at an additional cost. Please ask for a quote at the time of booking.

For more information regarding the Explore Free Transfer please refer to <https://www.explore.co.uk/transfers>.

Free transfers are not available for Self-Guided, Tailormade or Tours for Churches customers.

Booking a flight inclusive package with Explore

We have a good selection of flights not only from London but from many regional airports around the UK allowing us to compare fares between scheduled carriers as well as low cost and charter airlines. Our dedicated flights team will match the best flight options to your arrival and departure airport.

On our website we display a UK flight inclusive package guide price which is generally based on a London departure. To avoid paying supplements or to secure your preferred flight option, we recommend booking as early as possible, especially for peak travel dates.

Important Information

Travel Insurance

It is a condition of joining any of our tours that you must have valid travel insurance. It must indicate that you have cover for (at least) medical expenses and emergency repatriation in the event of illness or injury. Medical and repatriation insurance cover is not mandatory for UK residents who are travelling in England and Scotland. We also strongly recommend your policy includes curtailment, personal effects and cancellation protection as all deposits paid are non-refundable. You will also need to ensure your travel policy covers you for all activities you intend to do whilst on tour.

We are delighted to include FREE travel insurance **for all qualifying customers** who book an Explore trip from 01 January 2015.

For more information about Travel insurance and to check whether you are eligible to receive free cover, please visit www.explore.co.uk/insurance. Explore Worldwide Ltd are an Appointed Representative of Campbell Irvine Limited, who are authorised and regulated by the Financial Conduct Authority. The registration number can be checked by visiting the the FCA's website www.fca.gov.uk or by contacting them on 0800 111 6768.

Visa Information

South Africa: Visas are not required by UK, Australian, New Zealand, US and Canadian citizens. Other nationalities should consult their local embassy or consular office.

All visitors should ensure their passport has two consecutive blank pages for the entry stamp. The South African Immigration officials will not allow child/ infant pages to be used for this purpose and visitors without the stipulated blank pages will be denied entry.

For all tours departing from October 1st 2014 it will be obligatory for parents travelling with children to show the child's full birth certificate, and where only one parent is accompanying, proof of parental or legal authority to travel with the child (eg an affidavit from the other parent, a court order or - if applicable - a death certificate). You should travel with these documents in case you're asked to provide them.

Swaziland: Visas are not required by UK, Australian, New Zealand, and Canadian citizens. Other nationalities should consult their local embassy or consular office.

All visa information is subject to change. You should confirm all visa related questions with the relevant Embassy prior to departure.

Vaccinations & Protection

South Africa

Please note that you will be required to supply a yellow fever certificate that has been issued at least 10 days prior to arrival in South Africa if you have travelled from or via a country where yellow fever is endemic. We recommend protection against hepatitis A, tetanus, typhoid, polio and diphtheria. According to various travel health sources, the Western Cape is not regarded as a malaria risk area. The above is not an exhaustive list. Further information regarding vaccinations and travel health advice can be found by following the NHS and NaTHNaC links at <http://www.explore.co.uk/Travelhealth/> and from your local healthcare provider. Visa and vaccination requirements are subject to change and should be confirmed before departure.

Swaziland

Please note that you will be required to supply a yellow fever certificate that has been issued at least 10 days prior to arrival in South Africa if you have travelled from or via a country where yellow fever is endemic. We recommend protection against malaria, hepatitis A, tetanus, typhoid, polio and diphtheria. Consult your travel clinic for latest advice on different prophylaxis available against malaria. Special Note: Visa and vaccination requirements are subject to change and should be confirmed before departure. The above is not an exhaustive list. Further information regarding vaccinations and travel health advice can be found by following the NHS and NaTHNaC links at <http://www.explore.co.uk/Travelhealth/> and from your local healthcare provider.

Preparing for your Tour

Climate

South Africa

Mild throughout the year and can thus be visited year round. The Western Cape has a Mediterranean-type climate, with warm, dry summers and cold winters with rainfall. Summer runs from November to March, with temperatures averaging 22oC to 34oC. The months of April and October are generally warm and sunny. Winter is also a good time to visit as towns and sites are not so crowded and the countryside is more verdant, but it can be cold. Additional information and climate charts can be accessed at <http://www.explore.co.uk/weather>. Seasonal weather patterns can be unpredictable. Up-to-date information on the weather worldwide can be found by following the BBC weather link on this page.

Swaziland

Can be visited all year round. Most rain falls in the summer months (October-April). The climate during this period is generally hot and humid in the lowlands with temperatures sometimes up to 40°C. Winters (June-August) are much drier and colder, but still pleasant for travel. The high veld has a temperate climate. Average daily sunshine hours are high throughout the year. Additional information and climate charts can be accessed at <http://www.explore.co.uk/weather>. Seasonal weather patterns can be unpredictable. Up-to-date information on the weather worldwide can be found by following the BBC weather link on this page.

Clothing

Clothing should generally be lightweight for the day. A few warm fleeces and long trousers are strongly recommended as nights can be very cold, especially from May to August and in the highlands of Swaziland. A waterproof and windproof jacket are also recommended, particularly between October and April. Avoid brightly coloured clothing for game viewing. Take a swimming costume. Please note that it is forbidden to wear camouflage clothing in Swaziland.

Equipment

Bring a torch, water bottle, sunhat/sunscreen and insect repellent. Binoculars are essential for game viewing and a 300mm lens is recommended for photography. Mosquito nets are not required as the accommodation provides screening where necessary.

Footwear

Comfortable walking shoes or lightweight boots for the treks, trainers or sandals for relaxing/travelling.

Luggage: On Tour

Take a tough soft bag or holdall (or rucksack with detachable frame) suitable to be carried by 4WD vehicle. Total allowance: 33lb/ 15kg maximum (due to weight restrictions on our vehicle). Also take a daypack for items needed during any short walks and game drives (20-30 litre).

Luggage allowance on tour: 15Kg

General Information

Country details

South Africa

Population: 50,586,757

Size of Country: 1,221,037

Major Language: Afrikaans, English

Religion: Christian

Time Difference to GMT: +2

Swaziland

Population: 1,185,000

Size of Country: 17,364 sq km

Major Language: English, Swati

Religion: Christian

Time Difference to GMT: +2

Electric Supply & Plugs

South Africa

3 Pin Round

Why Choose Explore

We've been creating award-winning pioneering adventure holidays for over 30 years, earning the trust of thousands of delighted customers, who feel safe in our hands. Our tour leaders have expert local knowledge and our tours are designed to take you off the beaten track to see the most exotic, inspiring and dramatic places in the world.

- With over 30 years' experience, we are passionate about what we do.
- Pioneering small group adventures, self-guided, private journeys & tailor-made holidays.
- Award winning tour leaders who you can trust.
- Responsible travel is and always has been one of the driving principles of Explore.

Our adventure holidays are full of exciting things to see and do, exploring in small groups travelling by bus, boat, plane, rickshaw, camel, elephant, or any number of unusual forms of transport. Often you will stay in family run hotels and village houses and enjoy authentic local cuisine. In this way, it's easy to discover the true heart of the people and the place you travel to – and make some new friends along the way. Each tour is uniquely different, so please feel free to browse through our tours to see what may whet your appetite.

Our commitment to the environment

We are passionate about sustainable travel and work hard to create tours where your holiday delivers real benefits to the local communities. We minimise our impact by travelling in small groups, respecting local cultures and traditions, reducing waste and offsetting 100% of the CO2 from our flights.

When you travel with Explore, you are directly contributing to local economies and helping empower the people you meet. We currently support a range of charities and good causes, including: Toilet Twinning (helping to flush away poverty), Lone Buffalo Foundation (a community project based in Laos providing creative skills for young people), Dekamer (a turtle rescue centre in Turkey) and Kids Saving the Rainforest (a wildlife rescue centre in Costa Rica supported through the LATA foundation). We also care passionately about the world's wildlife. We are patrons of the Born Free Organisation and Friends of Conservation.

Cool Earth

Explore are proud to support Cool Earth in their effort to reduce global carbon dioxide levels through the prevention of deforestation in the South America rainforest. Cool Earth focus on areas in immediate danger of deforestation, supporting local communities to be forest guardians. To date 350,000 acres of rainforest has been protected. Saving rainforest also protects rare animals and plants, allows local forest communities to maintain their way of life, and protects a major source of oxygen and fresh water. When you travel on an Explore holiday we make a donation to Cool Earth that exceeds the impact of our customers flights each year.

Earth Matters

- [The Travel Foundation](#)
Explore are active members and supporters of the Travel Foundation which has established a variety of sustainable tourism projects in destinations and works with industry to improve practice. Visit their website www.thetravelfoundation.org.uk
- [Tourism Concern](#)
Explore support the work of Tourism Concern who campaign for fairly and ethically traded tourism, and are part of its Ethical Tour Operator Group www.tourismconcern.org.uk
- For further information on responsible travel go to <http://www.explore.co.uk/ResponsibleTourism/>

Know before you go

We strongly recommend that you check your government's travel advisory for up-to-date information and advice about your destination: safety and security, entry requirements, health, local laws and customs. For UK Foreign and Commonwealth Office Advice follow the link at <http://www.explore.co.uk/essential-travel-information/travel-resources/travel-safety>

Booking Your Holiday

Peace of mind - book with confidence

You can book your Explore holiday with confidence, as all monies paid to us for your trip are fully protected. Explore is a fully bonded tour operator licensed by the Civil Aviation Authority (CAA) and by ABTOT.

The air holiday packages (Tours including flights) that we advertise are ATOL protected, since we hold an Air Travel Organiser's Licence granted by the Civil Aviation Authority. Our ATOL number is ATOL 2595. In addition, As a member of the Association of Bonded Travel Organisers Trust Limited (ABTOT), Explore has provided a bond to meet the requirements of the Package Travel, Package Holidays and Package Tours Regulations 1992. Please note that packages booked outside the UK are only protected when purchased directly with Explore.

Reserving your place

To reserve your place on this tour you will need to check availability on the Explore website or through our dedicated call centre based in the UK where you can. Our tours can fill up quickly so you are advised to book as early as possible. If your chosen date is 'Available' or 'Guaranteed' we will be able to provisionally hold you a space for up to 48 hours.

For Self-Guided holidays and Private Journeys simply choose your date of travel and let us know so we can confirm all ground services.

The easiest way to confirm your booking is through our website. When you are ready to book, we normally require a 10% non-refundable deposit, but for some holidays this may be more to cover such items as permit fees, internal flights or other non-refundable services. If your travel starts within 60 days of booking, full payment will be required at the time of booking

100% No Surcharge Guarantee

The price paid for our holidays is no longer subject to change. Once booked and confirmed we will guarantee the price you pay will not increase, whatever the circumstances. You will not be approached to pay fuel surcharges unlike the vast majority of other adventure tour operators. The price guarantee applies to all new bookings departing between 1st January 2014 and 31st December 2015.

Tour Itinerary Versions

Itinerary details may vary depending on departure date and alternative itineraries for this tour may exist. Please refer to the dates and prices page on our website to check which itinerary operates on each departure date.

Please ensure that you have an up-to-date copy of these tour notes immediately before you travel, as from time to time our itineraries may be amended, either for operational reasons or in response to feedback from customers. You will be informed of any major changes to your tour but small changes may just be added to these tour notes.

Please note: 2015 itinerary versions are applicable to tours departing in 2015. 2016/17 itinerary versions are applicable to tours departing from 1st January to 31st December 2016.

These tour notes were printed on 27/02/2015 01:51:07